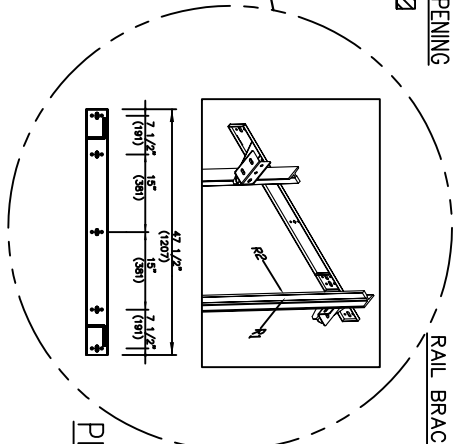
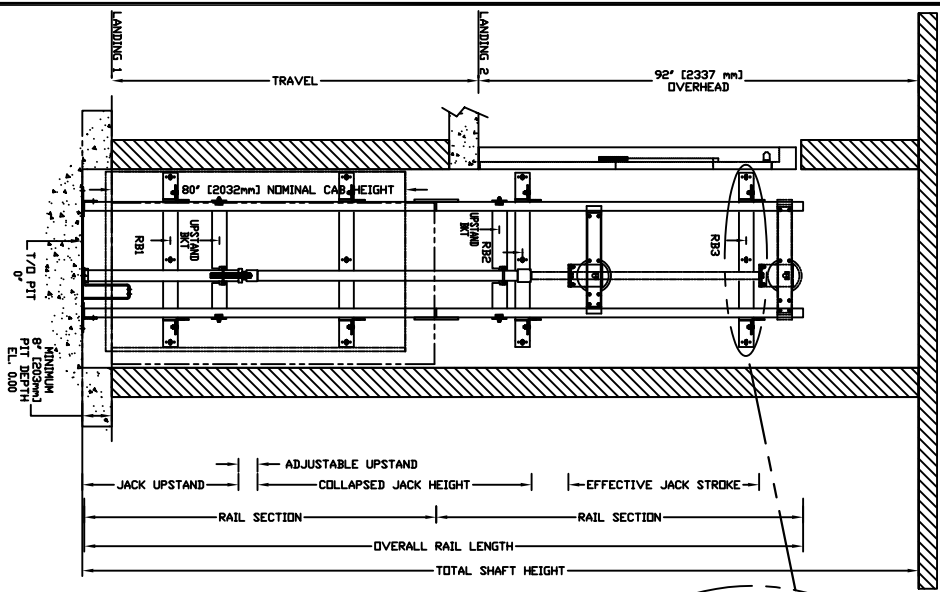
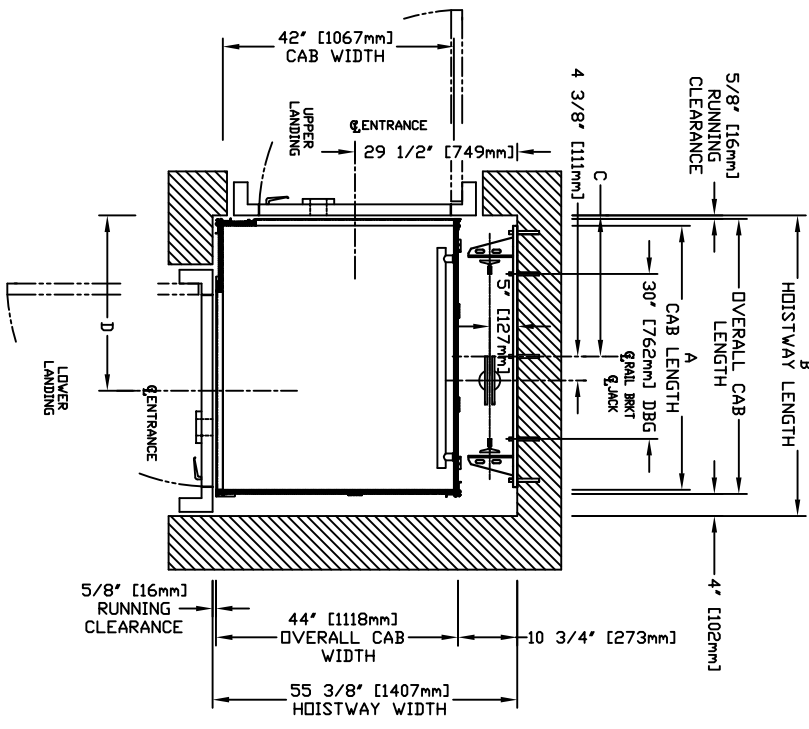


SECTIONAL VIEW - PROLIFT SCL Model TYPE 4-36" OPENING



TOP RAIL BRACKET RB3	AT TOP OF HOISTWAY CONCORD REPRESENTATIVE FOR EXACT LOCATION
INTERMEDIATE RAIL BRACKET RB2	48" [1219mm] INTERVALS ABOVE BOTTOM BRACKET
BOTTOM RAIL BRACKET RB1	24" [610mm] ABOVE PIT FLOOR

PLAN VIEW - PROLIFT SCL Model TYPE 4-36" OPENING

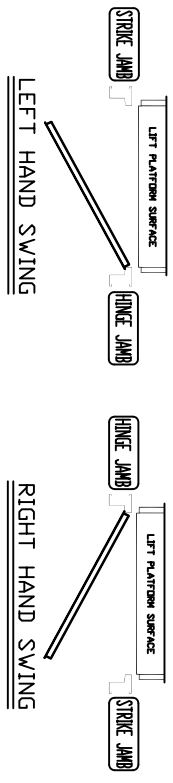


RAIL FORCES		CAPACITY
*R1	*R2	
355.03lb.f.	251.50lb.f.	1400 lbs.
304 lb.f.	194 lb.f.	1000 lbs.
RAIL WEIGHT : 80 lbs / ft		

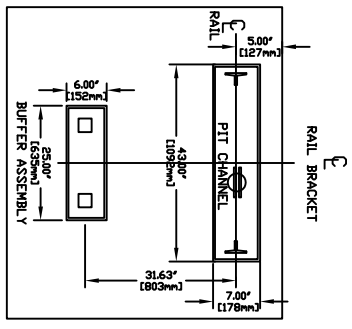
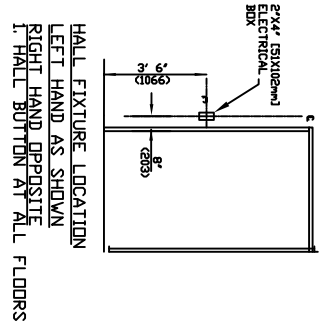
PIT FLOOR TO SUPPORT LOAD DF: * (INCLUDES IMPACT)		CAPACITY
6.4 kips	1400 lbs.	
5.33kips	1000 lbs.	

FOR TOTAL PULL-OUT FORCE ON RAIL BRACKET, R1 MUST BE DOUBLED eg. 608 lb.f for 1000 lbs.

R3 NOTE:



HOISTWAY DIMENSION			
A	B	C	D
CAP LENGTH	HOISTWAY LENGTH	RAIL BRKT CENTER LINE	ENTRANCE CENTER LINE
mm	mm	mm	mm
Inches	Inches	Inches	Inches
1219	1387	651	810
48	54 5/8	25 5/8	31 7/8



DOCUMENT REVISION #0. DATE: 12/09/10

COMMERCIAL WHEELCHAIR LIFT
PROLIFT SCL MODEL TYPE 4-36" OPENING

CUSTOMER:	DATE:		SHEET No.
PROJECT:	ENGINEER:		
LOCATION:	COMPILED BY:		