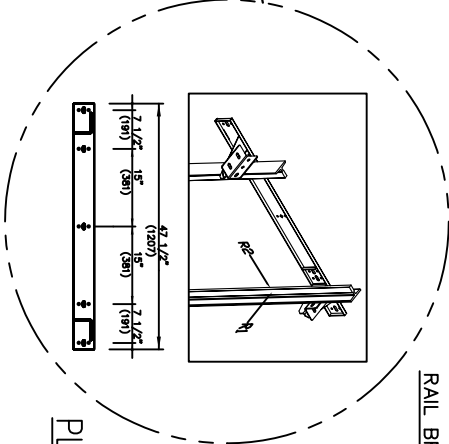
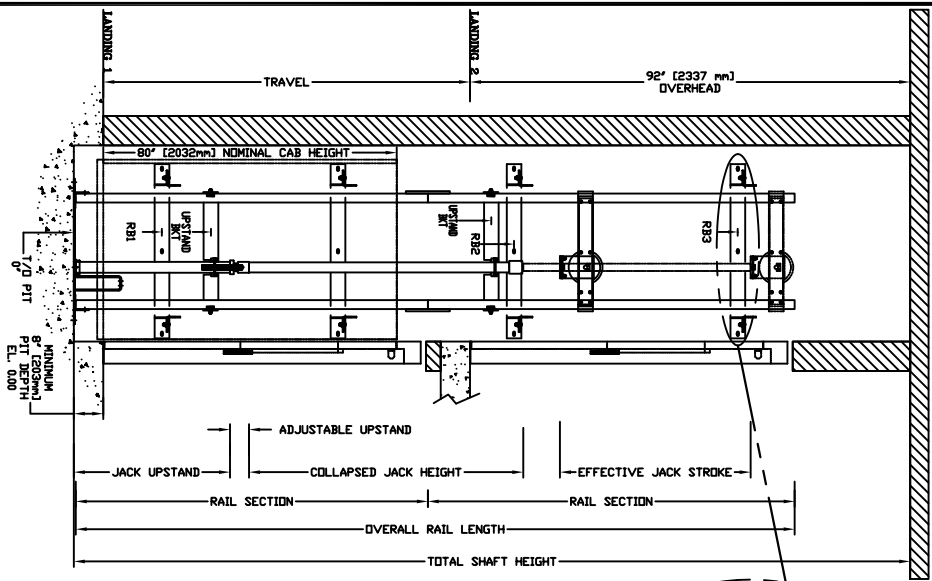


SECTIONAL VIEW - PROLIFT SCL Model TYPE 1R - 36"



RAIL BRACKET

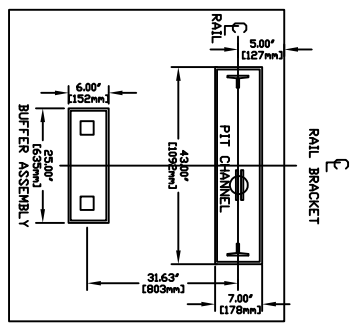
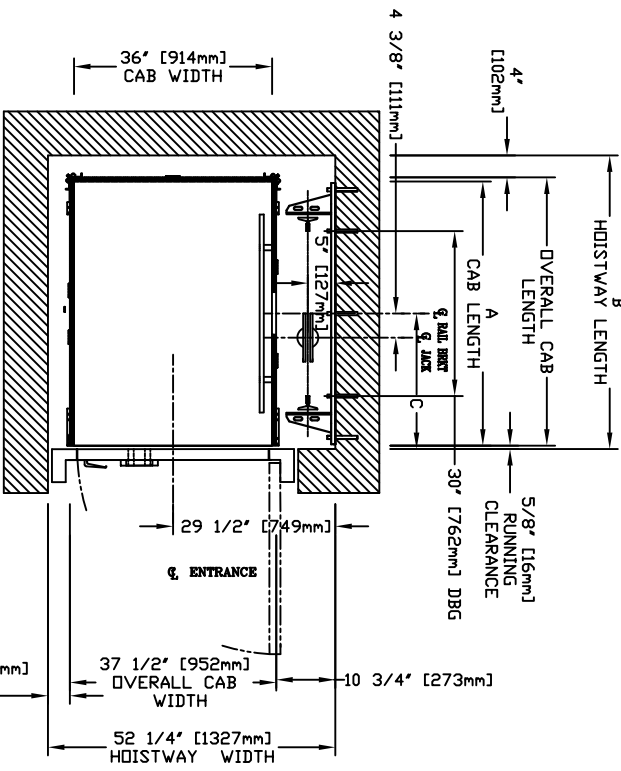
TOP RAIL BRACKET R3	AT TOP OF HOISTWAY CONSULT YOUR REPRESENTATIVE FOR EXACT LOCATION
INTERMEDIATE RAIL BRACKET RB2	48" [1219mm] INTERVALS ABOVE BOTTOM BRACKET
BOTTOM RAIL BRACKET RBI	24" [610mm] ABOVE PIT FLOOR

RAIL FORCES		
* R1	* R2	CAPACITY
355,031bf.	251,501bf.	1400 lbs.
304 lbf.	194 lbf.	1000 lbs.
RAIL WEIGHT : 80 lbs / ft		

R3 NOTE:		
PIT FLOOR TO SUPPORT LOAD OF: * (INCLUDES IMPACT)		
CAPACITY	6.4 Kips	1400 lbs.
	5.33Kips	1000 lbs.

FOR TOTAL PULL-OUT FORCE ON RAIL BRACKET, R1 MUST BE DOUBLED eg 608 lbf for 1000 lbs.

PLAN VIEW - PROLIFT SCL Model TYPE 1R - 36"



HOISTWAY DIMENSION

A		B		C	
CAB LENGTH	HOISTWAY LENGTH	RAIL BRKT CENTER LINE			
mm	Inches	mm	Inches	mm	Inches
1219	48	1356	53 3/8	635	25
1372	54	1508	59 3/8	711	28
1524	60	1661	65 3/8	787	31

HALL FIXTURE LOCATION
LEFT HAND AS SHOWN
RIGHT HAND OPPOSITE
HALL BUTTON AT ALL FLOORS



DOCUMENT REVISION #0. DATE: 12/09/10

COMMERCIAL WHEELCHAIR LIFT
PROLIFT SCL MODEL TYPE 1R - 36"

CUSTOMER:	DATE:		SHEET No.
PROJECT:	ENGINEER:		
LOCATION:	COMPLETED BY:		