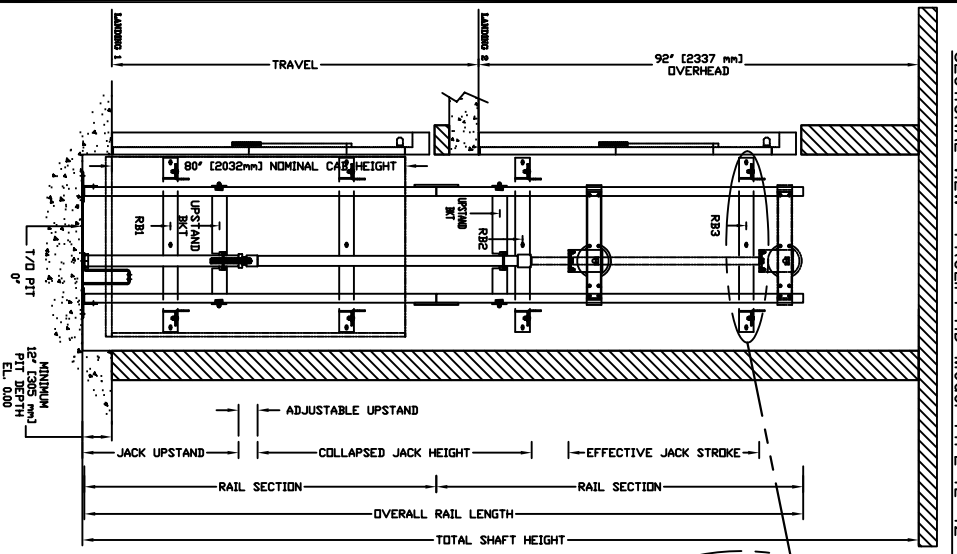
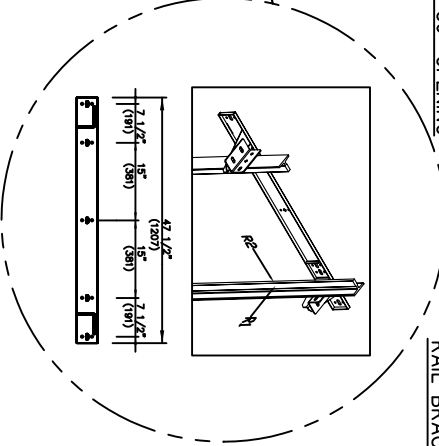


SECTIONAL VIEW - PROLIFT HD Model TYPE 1L-42- 36" OPENING



RAIL BRACKET



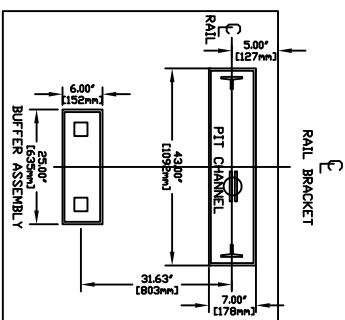
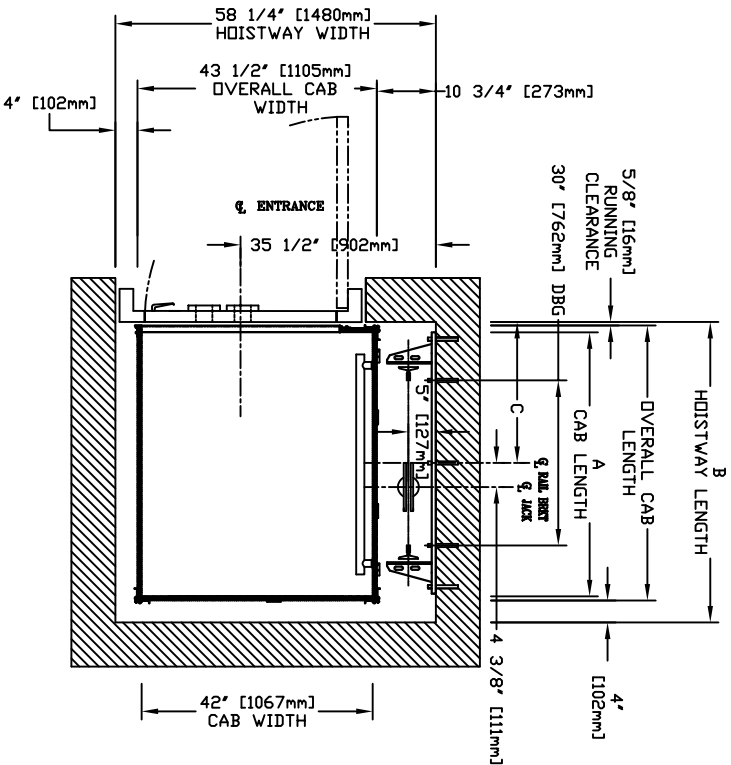
TOP RAIL BRACKET	AT TOP OF HOISTWAY CONSULT YOUR REPRESENTATIVE FOR EXACT LOCATION
INTERMEDIATE RAIL BRACKET	48" [1219mm] INTERVALS ABOVE BOTTOM BRACKET
BOTTOM RAIL BRACKET	24" [610mm] ABOVE PIT FLOOR

RAIL FORCES		
*R1	*R2	CAPACITY
35503lbf.	25150lbf.	1400 lbs.
304 lbf.	194 lbf.	1000 lbs.
RAIL WEIGHT : 80 lbs / ft		

R3 NOTE:		
PIT FLOOR TO SUPPORT LOAD DF: * (INCLUDES IMPACT)		
CAPACITY	1400 lbs.	
	5.33klps	1000 lbs.

FOR TOTAL PULL-OUT FORCE ON RAIL BRACKET, R1 MUST BE DOUBLED eg 608 lbf for 1000 lbs.

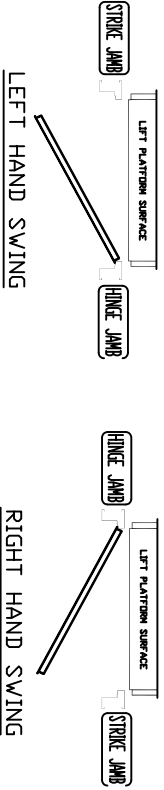
PLAN VIEW - PROLIFT HD Model TYPE 1L-42- 36" OPENING



HALL FIXTURE LOCATION LEFT HAND AS SHOWN RIGHT HAND OPPOSITE LEFT HAND BUTTON AT ALL FLOORS

HOISTWAY DIMENSION

A		B		C	
CAB LENGTH	HOISTWAY LENGTH	RAIL BRKT CENTER LINE			
mm	Inches	mm	Inches	mm	Inches
1372	54	1540	60 5/8	727	28 5/8
1524	60	1692	66 5/8	803	31 5/8



COMMERCIAL WHEELCHAIR LIFT
PROLIFT HD Model TYPE 1L-42- 36" OPENING

CUSTOMER: _____ DATE: _____
 PROJECT: _____ REVISION LINE: _____
 LOCATION: _____ COMPLETED BY: _____
 SHEET No. _____