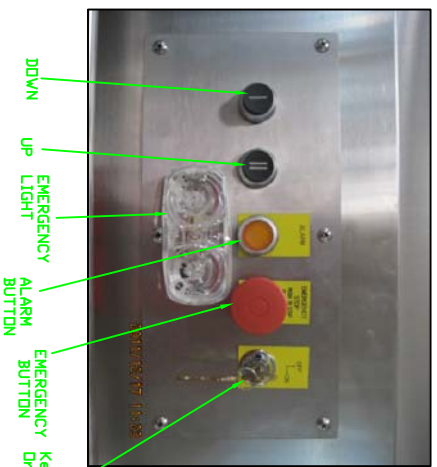
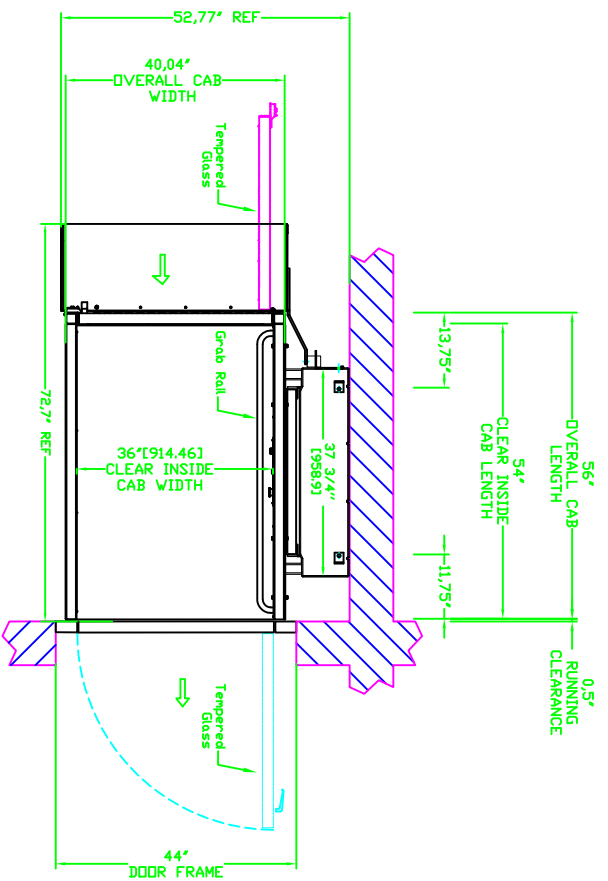


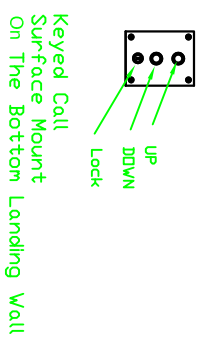
DRAWING APPROVAL:
 THIS DRAWING REFLECTS OUR INTERPRETATION OF THE INFORMATION PROVIDED BY THE DEALER ON THE ORDER FORM. THIS INFORMATION IS THE DEALER'S RESPONSIBILITY AND IS THE BASIS FROM WHICH THIS LIFT IS DESIGNED AND MANUFACTURED. PLEASE INDICATE THE REQUESTED ACTION BY CHECKING ONE OF THE FOLLOWING BOXES AND SIGNING BELOW TO AUTHORIZE COMPLETION OF THIS ORDER.

- APPROVED WITH NO EXCEPTIONS
- MANUFACTURE PRODUCT AS PER DRAWING
- APPROVED WITH EXCEPTIONS, NO REAPPROVAL REQUIRED.
- MAKE CHANGES AS NOTED, NO REAPPROVAL DRAWING REQUIRED
- CHANGE AS NOTED, REAPPROVAL REQUIRED
- MAKE CHANGES AS NOTED, SEND CORRECTED DRAWING FOR REAPPROVAL BEFORE MANUFACTURE

SIGNATURE: _____ DATE: _____
 CAUTION: ONCE THE DRAWING IS APPROVED, JOB CANCELLATION FEES WILL APPLY



- DOWN
- UP LIGHT
- EMERGENCY ALARM BUTTON
- EMERGENCY Key Removed BUTTON
- Lock



OFFICE USE ONLY:	
CONSTRUCTION VERSION Stamp:	Part No.:
MODEL VERSION Stamp:	Variant No.:

CUSTOMERS:	DATE:	REVISIONS:	Variant No.:
PRODUCT:	48 Stainless Multilift type 2L 36"x54" Cab +Top landing gate LH	COMPETED BY:	
ADDRESS:		JOB No.:	
		SHEET No. 1	