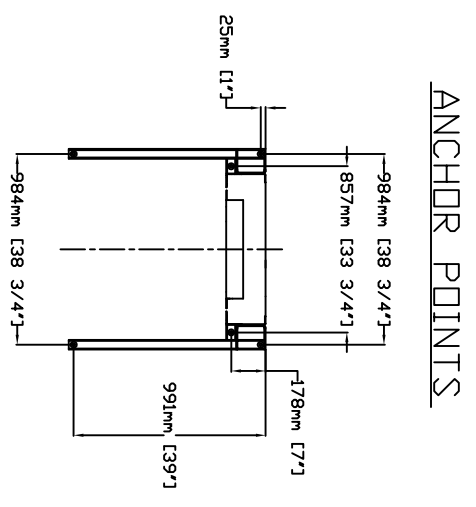


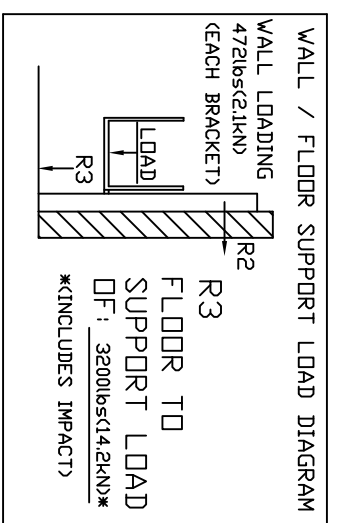
TABLE 1- MAST HEIGHT*

Max. Travel mm (Inches)	Extension Height mm (Inches)			Mast Height with 4.188" CAP	
	mm (Inches)	mm (Inches)	mm (Inches)	mm	Inches
1219 (48")	1			2748	108.188
1524 (60")	1			3053	120.188
1829 (72")	1		1	3662	144.188
2438 (96")	1	1		4272	168.188
2743 (108")	1	1		4272	168.188
3048 (120")	2			4882	192.188
3658 (144")	2		1	5440	214.188
4267 (168")	2		1	6050	238.188
4877 (192")	2	1		6660	262.188
5486 (216")	3			7269	286.188
6096 (240")	3		1	7828	308.188
6706 (264")	3			8438	332.188
7010 (276")	3	1		8692	342.188

*EXAMPLE TABLE WITH 3' PIT, DIMENSIONS VARY WITH TRAVEL



ANCHOR POINTS



FORCES

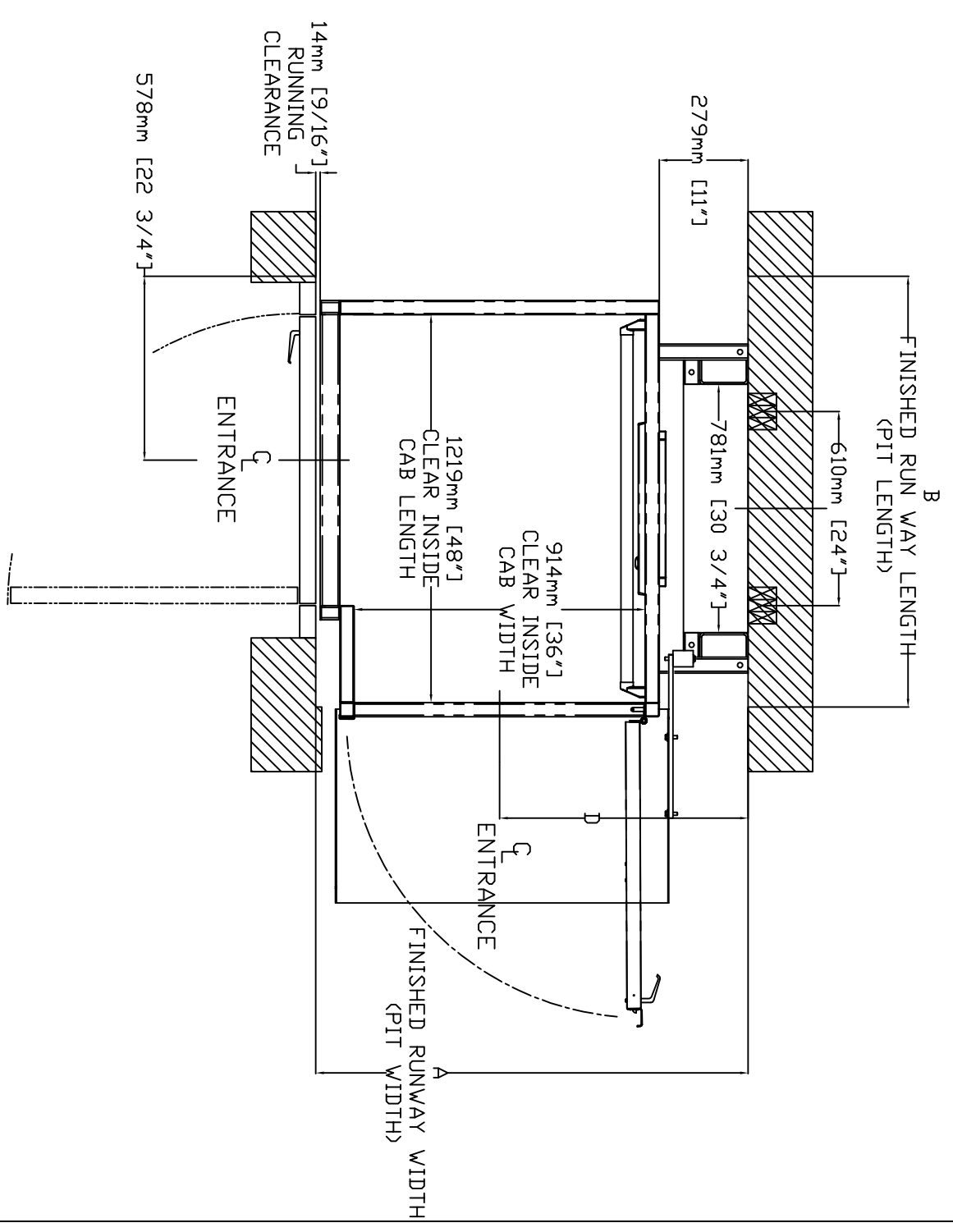
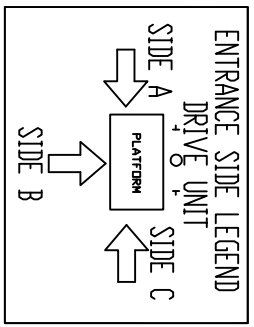
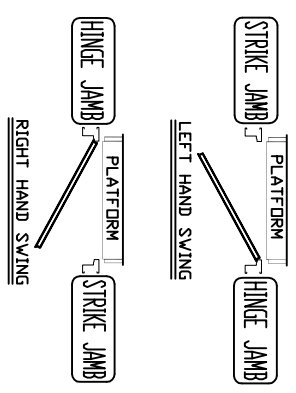


TABLE 2- HOISTWAY DIMENSION

CLEAR INSIDE CAB WIDTH	CLEAR INSIDE CAB LENGTH	A		B		C		D	
		mm	Inches	mm	Inches	mm	Inches	mm	Inches
914	36	1219	48	1359	53 1/2	N/A	N/A	781	30 3/4
914	36	1372	54	1359	53 1/2	N/A	N/A	781	30 3/4
914	36	1524	60	1359	53 1/2	N/A	N/A	781	30 3/4

DOOR SWING



THE INFORMATION DISCLOSED HEREIN IS THE EXCLUSIVE PROPERTY OF

AND MAY NOT BE USED BY OTHERS WITHOUT PRIOR WRITTEN CONSENT

TITLE: V1504

TYPE - 3

CUSTOMER		DATE: 11/12/2009		REVISION: 000	
PROJECT:		SCALE: 1:1		08/24/2009	
LOCATION:		DRAFTER: PHILLIP TRAN		SHEET 1 OF 1	
		DRAWING NO: V1504 PF gate			