

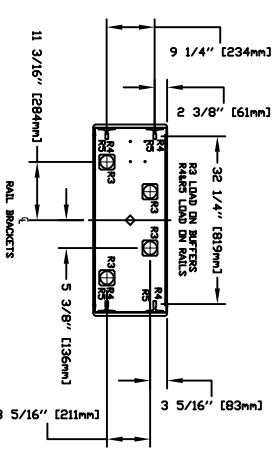
TABLE 1
RAIL FORCES

Rail	Weight
*R1	1570 lbf
*R2	1570 lbf
RAIL WEIGHT	60 lbs / 7 ft

FOR TOTAL FULL-LIFT FORCE ON RAIL BRACKET, USE TABLE 1 AND TABLE 2 FOR LOCAL APPLICATION OF PIT LOAD, RI MUST BE DOUBLED.

TABLE 2
LOADS ON PIT

RI	Reaction Force
R3	8900 LBS
R4	3900 LBS
R5	9500 LBS



PROVISIONS BY OTHERS

GENERAL
HISTORICAL - THE HISTORICAL MUST BE IN ACCORDANCE WITH SAFETY CODE FOR ELEVATORS AND ESCALATORS (ASME A17.1) AND ALL STATE AND LOCAL CODES.
RUNWAY - THE RUNWAY MUST BE FINISHED (CONCRETE OR MASONRY) AND MUST BE FINISHED TO THE SAME LEVEL AS THE FINISHED FLOOR OF THE BUILDING. THE RUNWAY MUST BE FINISHED TO THE SAME LEVEL AS THE FINISHED FLOOR OF THE BUILDING.
DOORS - THE DOORS MUST BE FINISHED TO THE SAME LEVEL AS THE FINISHED FLOOR OF THE BUILDING.
ELECTRICAL - THE ELECTRICAL MUST BE FINISHED TO THE SAME LEVEL AS THE FINISHED FLOOR OF THE BUILDING.
PLUMBING - THE PLUMBING MUST BE FINISHED TO THE SAME LEVEL AS THE FINISHED FLOOR OF THE BUILDING.
MECHANICAL - THE MECHANICAL MUST BE FINISHED TO THE SAME LEVEL AS THE FINISHED FLOOR OF THE BUILDING.

TABLE 3
ELECTRICAL

DESCRIPTION	RATING	VOLTS	PHASE	FLA
HOIST & EQUIP	30 AMPS/800 Volt Three Phase		3	28.9 AMPS
WIND UP & EQUIP	60 AMPS/240 Volt Single Phase		1	55.0 AMPS
CAB LIGHTS	15 AMPS/120 Volt Single Phase		1	15.0 AMPS

NOTE C
ALL INFORMATION IS SUBJECT TO CHANGE.
PLEASE REFER TO THE MOST RECENT UPDATES.
WWW.SAVARIA.COM FOR THE MOST RECENT UPDATES.

RESIDENTIAL ELEVATOR
ZENITH MODEL 40X54 TYPE 1L

CUSTOMER: _____ DATE: _____
PROJECT: _____ DRAWING NO.: _____
LOCATION: _____ CHECKED BY: _____

THE INFORMATION CONTAINED HEREIN IS THE EXCLUSIVE PROPERTY OF SAVARIA LLC. ALL RIGHTS RESERVED.
SAVARIA LLC
AND MAY NOT BE USED BY OTHERS WITHOUT EXPRESS WRITTEN CONSENT.

SHEET 1/1