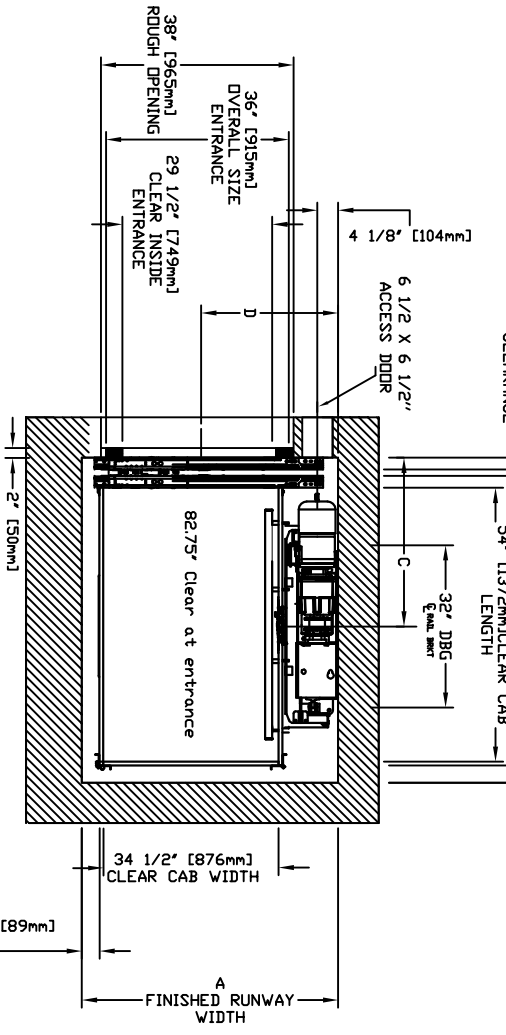
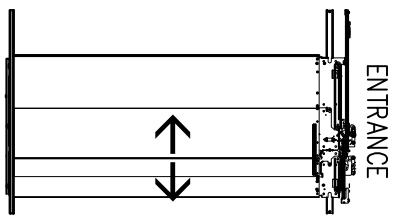
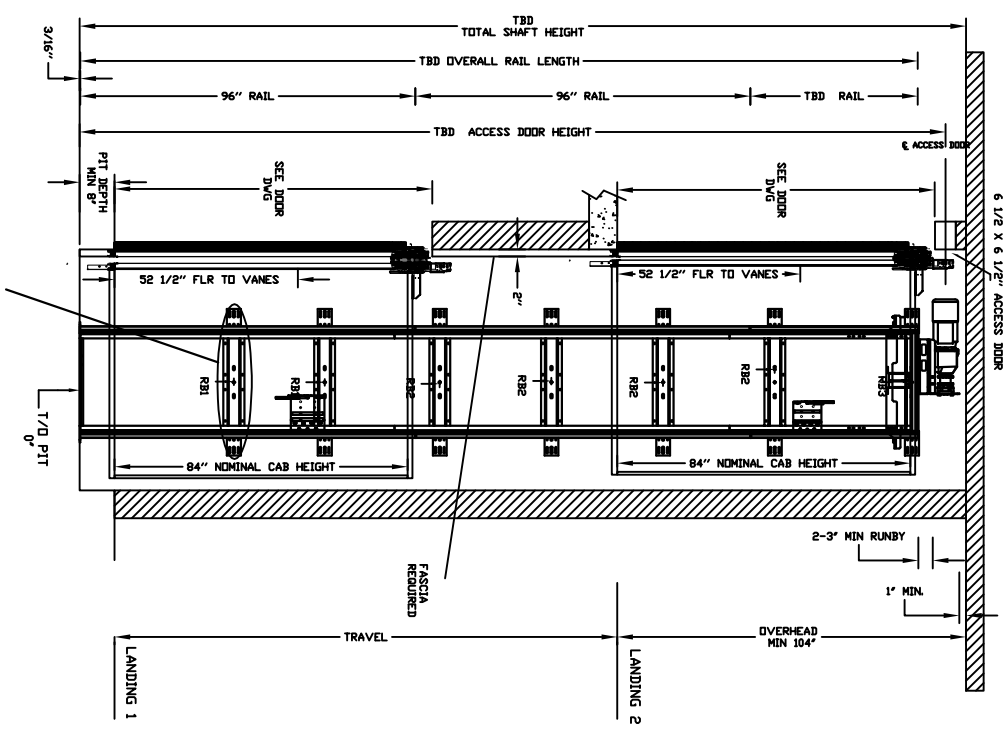


ECLIPSE AUTO SLIM DOORS Model TYPE 1L-29 1/2 + SLIM



CLEAR INSIDE CAB WIDTH	CLEAR INSIDE CAB LENGTH	A FINISHED RUNWAY WIDTH		B FINISHED RUNWAY LENGTH		C RAIL CENTER LINE		D DOOR CENTER LINE			
		mm	Inches	mm	Inches	mm	Inches	mm	Inches		
876	34 1/2	1219	48	1283	50 1/2	1473	58	794	31 1/4	686	27
876	34 1/2	1372	54	1283	50 1/2	1626	64	845	33 1/4	686	27
876	34 1/2	1524	60	1283	50 1/2	1778	70	921	36 1/4	686	27

DOCUMENT REVISION 000, DATE: 03/01/17

RESIDENTIAL ELEVATOR

ECLIPSE SLIMS DOORS TYPE 1L-29 1/2 + SLIM

ALL INFORMATION IS SUBJECT TO CHANGE. PLEASE REFERENCE OUR ON-LINE DRAWINGS AT www.savaria.com FOR THE MOST RECENT UPDATES



1/1

RAIL FORCES	
* R1	* R2
1382 kg [124.1 lb]	882 kg [194.1 lb]
1382 kg [124.1 lb]	1474 kg [1324.1 lb]
RAIL WEIGHT: 180 lbs / ft	RAIL WEIGHT: 249 / ft
PIT FORCE: R3	
PIT FLOOR TO SUPPORT LOAD (INCLUDES IMPACT)	
2909 kg [6400 lbs]	

FINAL RAIL BRACKET	FINAL RAIL BRACKET LOCATION
RB3	BELOW THE MOTOR CONSULT YOUR REPRESENTATIVE FOR EXACT LOCATION
INTERMEDIATE RAIL BRACKET	32" (813mm) INTERVALS AFTER 2nd BOTTOM BRACKET
RB2	39" (991mm) & 71" (1804mm) ABOVE PIT FLOOR
BOTTOM RAIL BRACKET	RB1

LOAD BEARING WALL (SEE PLANNING GUIDE)
 MOUNTING BRACKET
 4 WALL ANCHOR POINTS MIN. PER BRACKET
 2 PER SIDE OF RAIL BRACKET CENTER LINE
 PULL OUT FORCE PER FASTENER 69 kg (152 LBS)

