

TYPICAL ENCLOSURE

TABLE 1 - MAST HEIGHT

| TRAVEL | TOWER HEIGHT | MIN ENCLOSURE HEIGHT |
|-------------|--------------|----------------------|
| mm (Inches) | mm | Inches |
| 1219 (48") | 2032 | 80 |
| 1829 (72") | 2642 | 104 |
| | | 2896 |
| | | 114 |

TYPICAL ENCLOSURE WITH EXTENSION & CLEAR PLEXIGLASS DOME & VENTILATION SYSTEM & DOOR OPERATOR

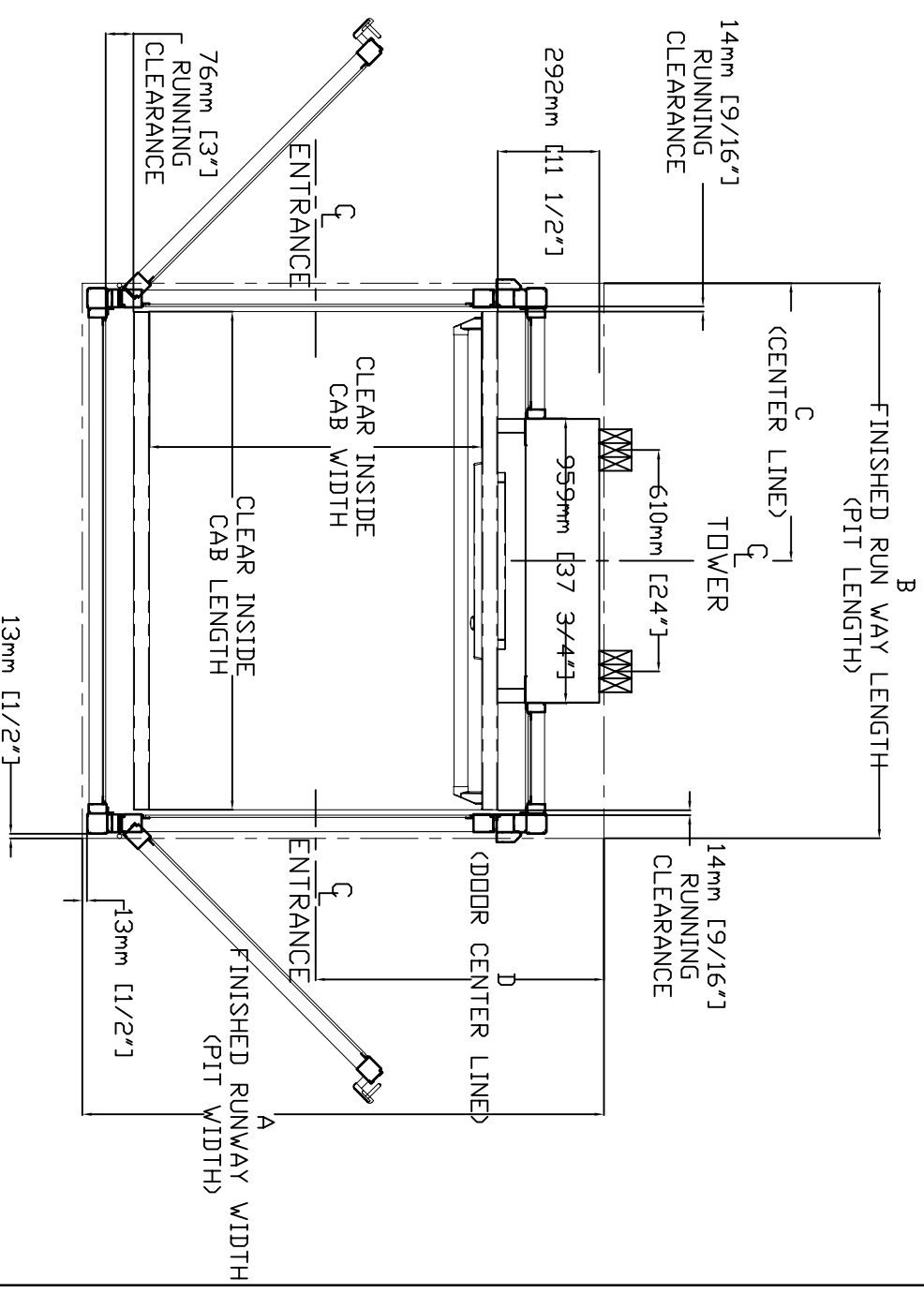
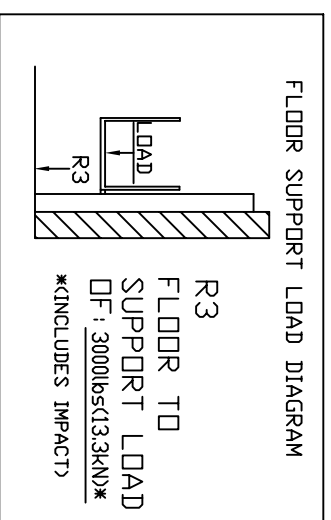


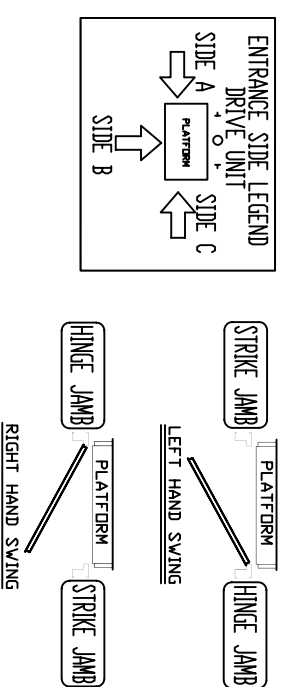
TABLE 2 - ENCLOSURE DIMENSION

| CLEAR INSIDE CAB WIDTH | CLEAR INSIDE CAB LENGTH | A | | B | | C | | D | | | |
|------------------------|-------------------------|------|--------|------|---------|------|---------|-----|---------|-----|--------|
| | | mm | Inches | mm | Inches | mm | Inches | mm | Inches | | |
| 914 | 36 | 1219 | 48 | 1449 | 57 1/16 | 1376 | 54 3/16 | 687 | 27 1/16 | 806 | 31 3/4 |
| 914 | 36 | 1372 | 54 | 1449 | 57 1/16 | 1529 | 60 3/16 | 764 | 30 1/16 | 806 | 31 3/4 |
| 914 | 36 | 1524 | 60 | 1449 | 57 1/16 | 1681 | 66 3/16 | 840 | 33 1/16 | 806 | 31 3/4 |

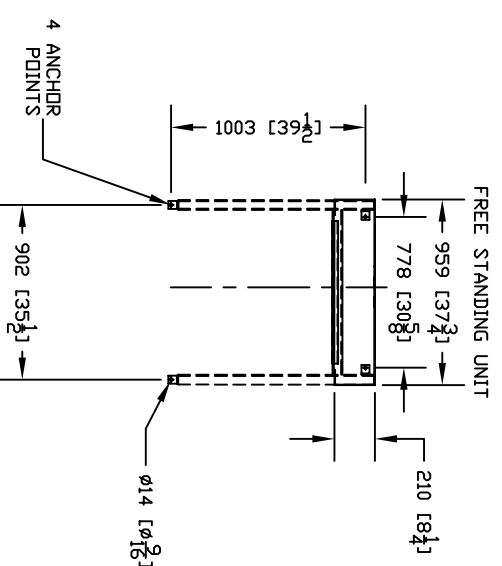
FORCES



DOOR SWING



ANCHOR POINTS



| | | | |
|---|--|------------------|--|
| THE INFORMATION DISCLOSED HEREIN IS THE EXCLUSIVE PROPERTY OF | | CUSTOMER | |
| AND MAY NOT BE USED BY OTHERS WITHOUT PRIOR WRITTEN CONSENT | | DATE: 11/22/2011 | |
| TITLE: MULTILIFT TYPE - 2 | | SCALE: 1:1 | |
| PROJECT: LOCATION: | | REVISION: 000 | |
| DRAWING NO: MULTILIFT ENCLOSURE | | SHEET 1 OF 1 | |
| DRAFTER: PHILLIP TRAN | | DATE: 11/22/2011 | |