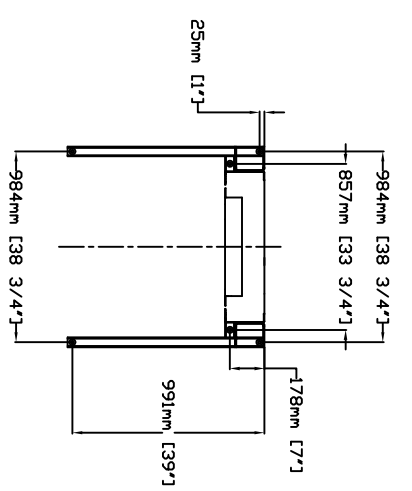


TABLE 1- MAST HEIGHT*

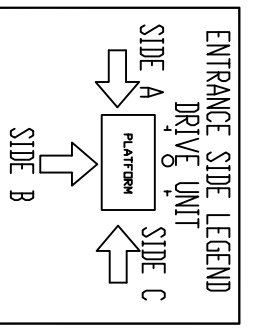
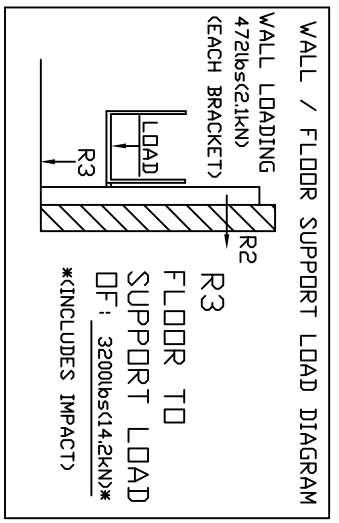
Max. Travel mm (Inches)	Extension Height				Mast Height with 4.188" CAP	
	mm (Inches)	mm (Inches)	mm (Inches)	mm (Inches)	mm	Inches
1219 (48")	1				2748	108.188
1524 (60")	1			1	3053	120.188
1829 (72")	1	1			3662	144.188
2438 (96")	1	1	1		4272	168.188
2743 (108")	1	1			4272	168.188
3048 (120")	2				4882	192.188
3658 (144")	2		1		5440	214.188
4267 (168")	2	1			6050	238.188
4877 (192")	2	1	1		6660	262.188
5486 (216")	3				7269	286.188
6096 (240")	3		1		7828	308.188
6706 (264")	3	1			8438	332.188
7010 (276")	3	1	1		8692	342.188

*EXAMPLE TABLE WITH 3' PIT, DIMENSIONS VARY WITH TRAVEL

ANCHOR POINTS



FORCES



FINISHED RUN WAY LENGTH (PIT LENGTH)

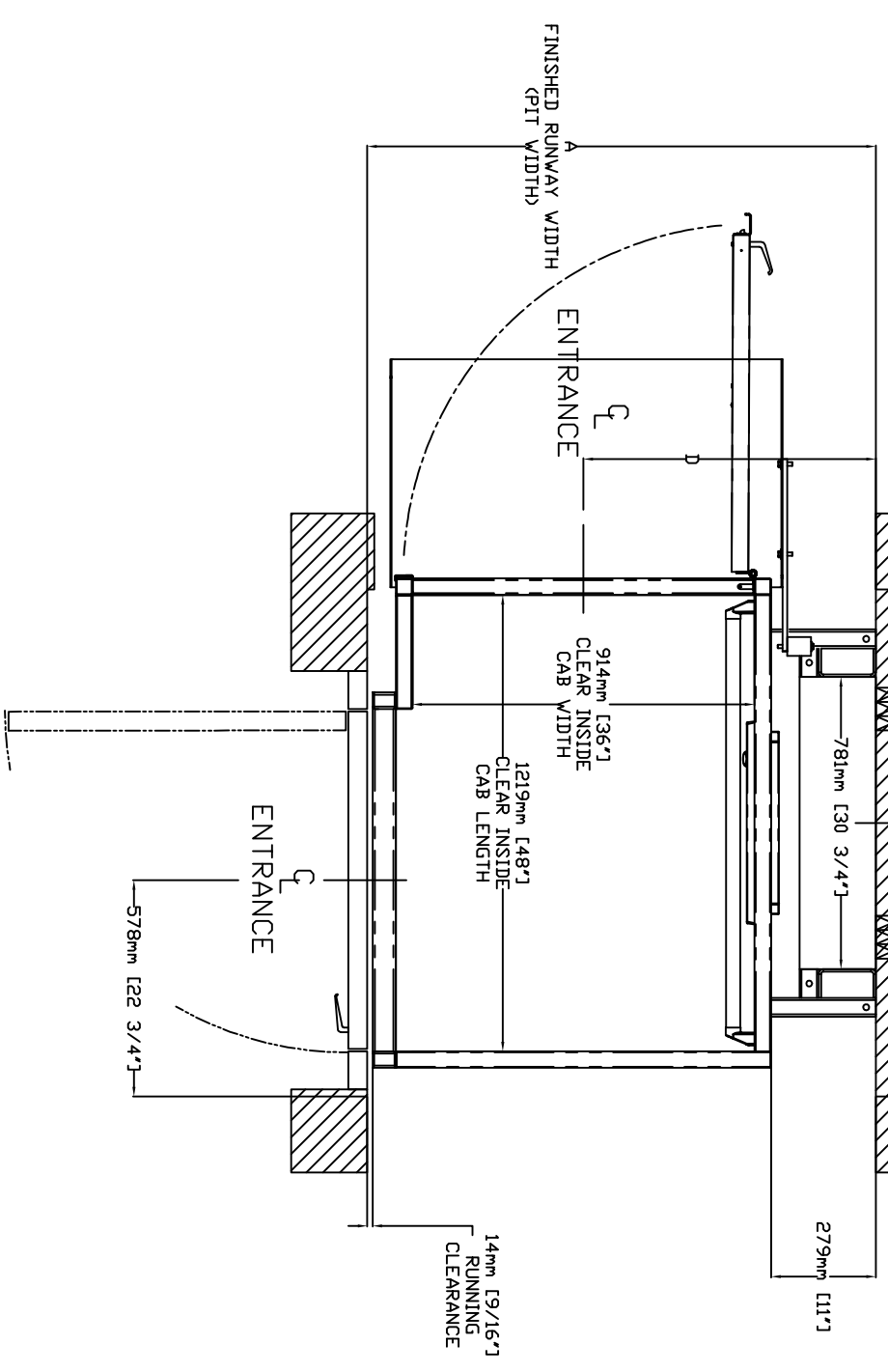
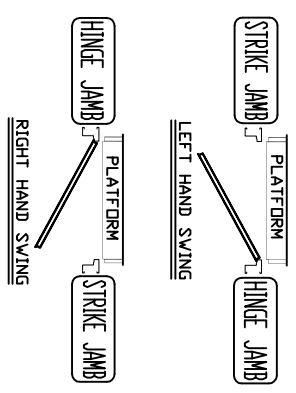


TABLE 2- HOISTWAY DIMENSION

CLEAR INSIDE CAB WIDTH	CLEAR INSIDE CAB LENGTH	A		B		C		D	
		mm	Inches	mm	Inches	mm	Inches	mm	Inches
914	36	1219	48	1359	53 1/2	N/A	N/A	781	30 3/4
914	36	1372	54	1359	53 1/2	N/A	N/A	781	30 3/4
914	36	1524	60	1359	53 1/2	N/A	N/A	781	30 3/4

DOOR SWING



THE INFORMATION DISCLOSED HEREIN IS THE EXCLUSIVE PROPERTY OF



AND MAY NOT BE USED BY OTHERS WITHOUT PRIOR WRITTEN CONSENT

TITLE:	V1504 TYPE -4	CUSTOMER:	DATE:	11/12/2009	REVISION:	000
PROJECT:		PROJECT:	SCALE:	1:1	DATE:	08/24/2009
LOCATION:		DRAFTER:	PHILLIP TRAN	SHEET	1 OF 1	
		DRAWING NO.:	V1504 PF gate			